

Kaiba

CANADIAN INTERNATIONAL SCHOOL

Seepage Rectification Works

GENO LIM / 8189 3693

ADDRESS: BLK 1001 JLN BUKIT MERAH #03-10, S159455

EMAIL: kaiba.gc@gmail.com



Reg No: T17LP0074F



Contents

Existing Seepage Condition

Window Seepage Condition	03
External Wall Seepage Condition	04
Rooftop Seepage Condition	05

Seepage Rectification Works

Window Seepage Rectification Works	06
External Wall Seepage Rectification	08
Rooftop Seepage Rectification Works	10



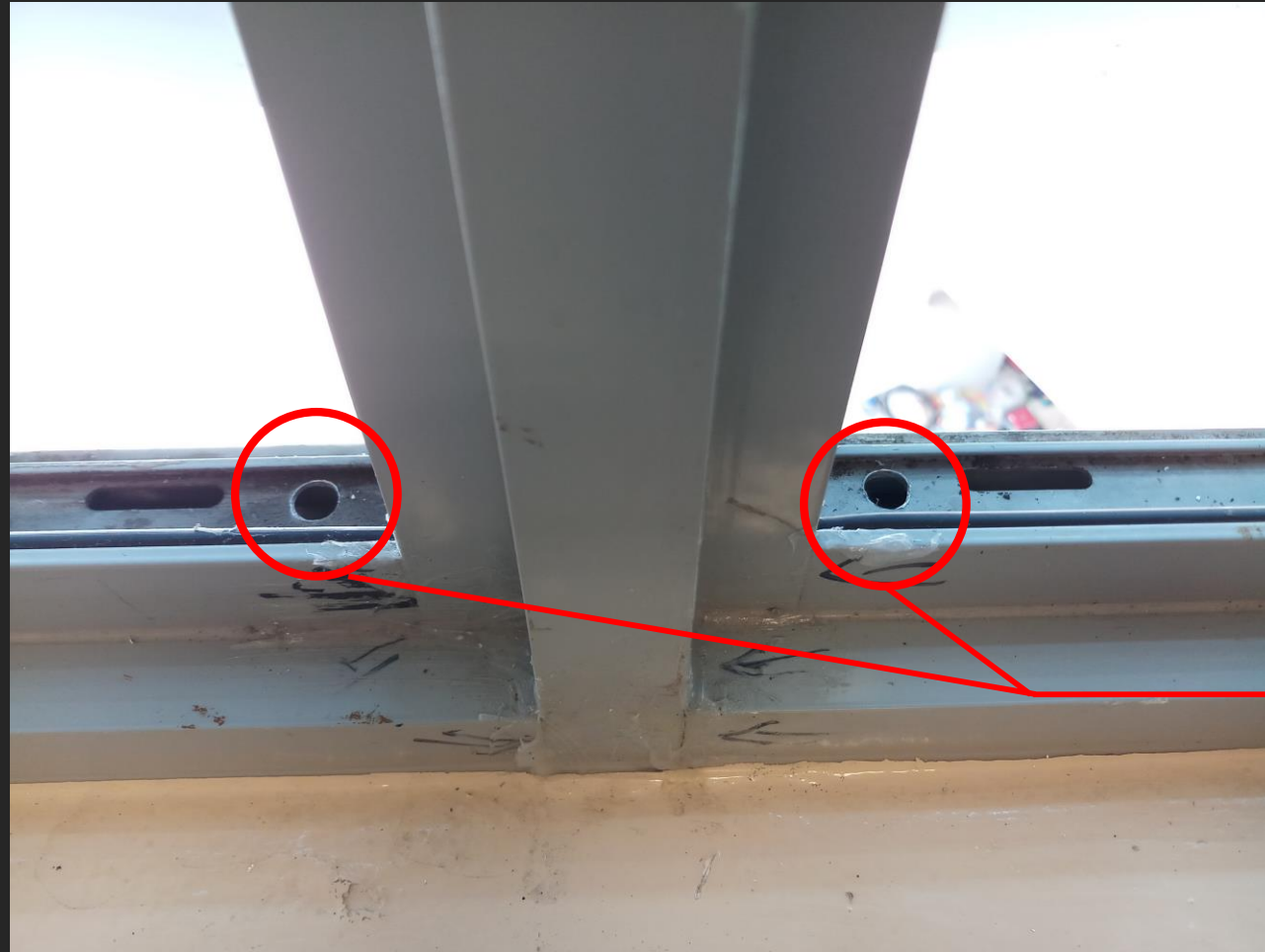
EXISTING SEEPAGE CONDITION



EXISTING SEEPAGE CONDITION



EXISTING SEEPAGE CONDITION



Drilling additional weep-hole to drain off water.

SEEPAGE RECTIFICATION WORKS

Using self-adhesive sealing strip on sides of window frame to ensure water tightness when windows are close



SEEPAGE RECTIFICATION WORKS



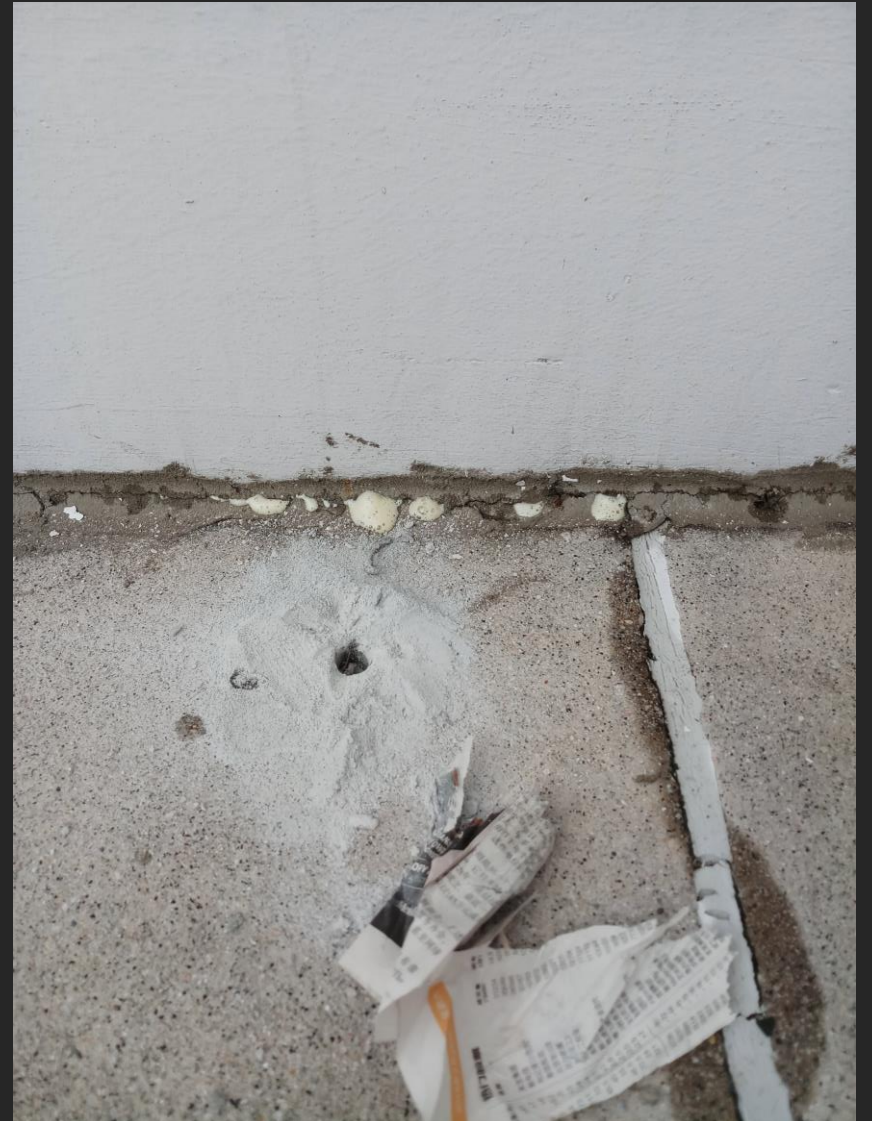
SEEPAGE RECTIFICATION WORKS



SEEPAGE RECTIFICATION WORKS



Presence of
water beneath
roof slab



SEEPAGE RECTIFICATION WORKS